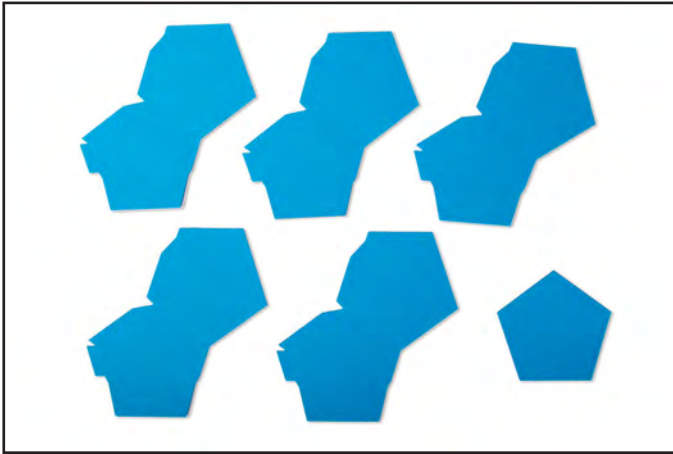
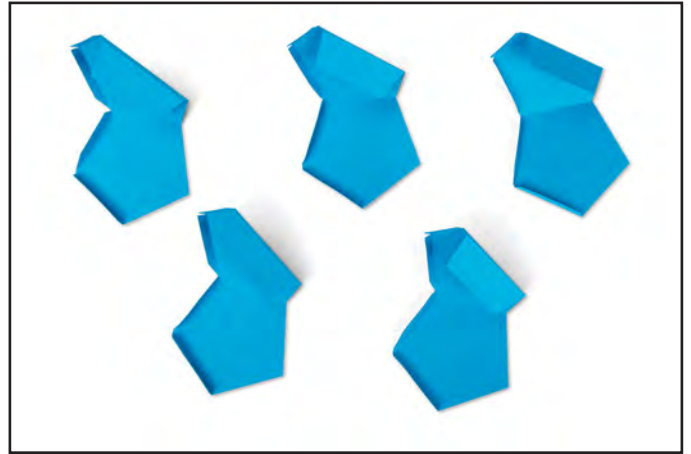




661930 Sizzix® Thinlits™ Die Set - Geometric Holder, 3-D by Lynda Kanase



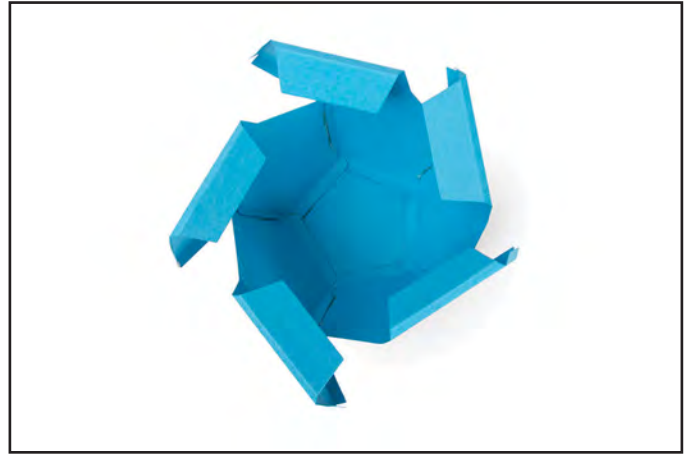
1. Die-cut five side panels and one bottom piece from desired material.



2. With all side panels in the same orientation, fold all score lines inward.



3. Adhere the base tab of each side panel to the bottom piece as shown.



4. Adhere the side tab at the bottom of each side panel to the open edge of the adjacent side panel.



5. Repeat step 4 with the middle and top layer side tabs to complete the body of the Geometric Holder.



6. Apply adhesive to the inside of the large top flaps, and adhere each flap to the inside of the Geometric Holder to create the finished rim.