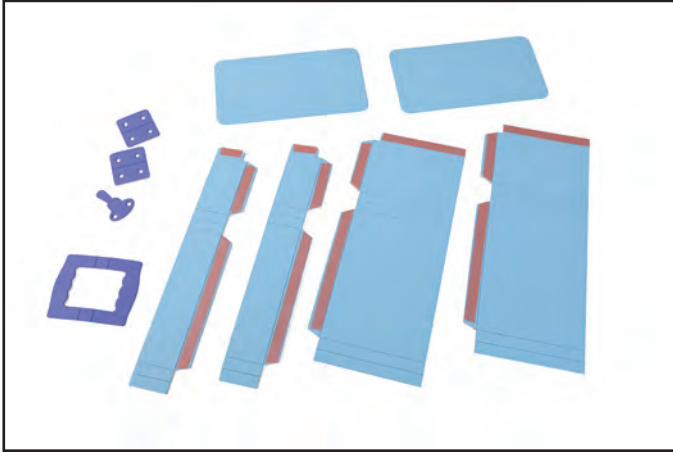
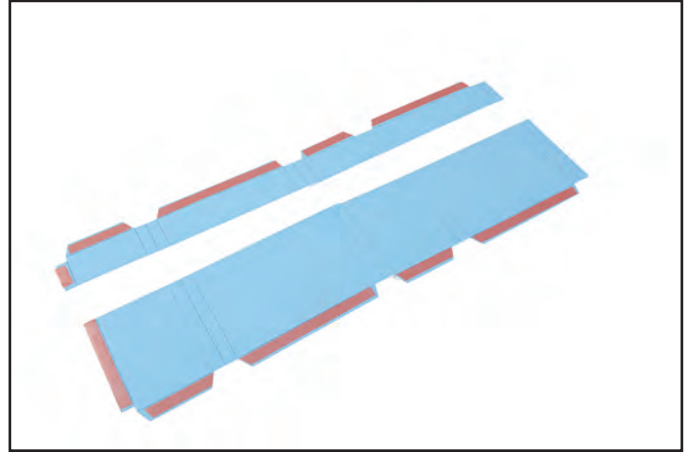




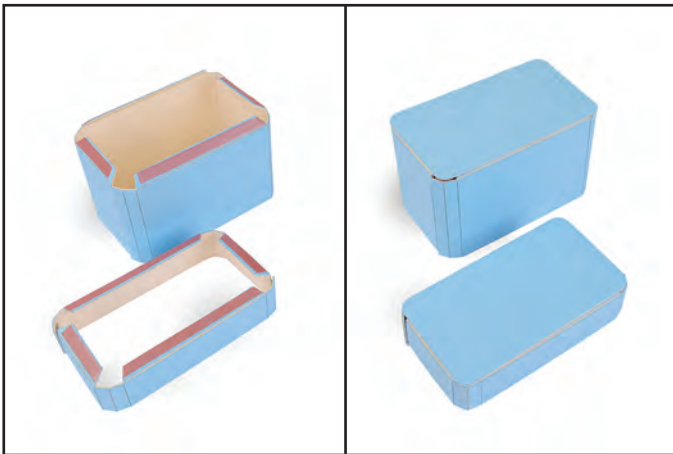
# 660333 Sizzix® ScoreBoards™ XL Die - Box, Train Case by Eileen Hull



1. Die-cut Train Case from Matboard and apply adhesive as shown.



2. Adhere the two lid pieces together and the two body pieces together as shown.



3. Enclose and adhere the lid and body pieces together. Attach the top and bottom pieces to the lid and body.



4. Adhere the handle to the top of the lid. Attach the lid to the body with the hinge pieces and attach the decorative clasp to the front of the lid.



5. Using a pointed instrument, pierce holes for the hinge rivets. Place small brads into each of the holes. Embellish as desired.